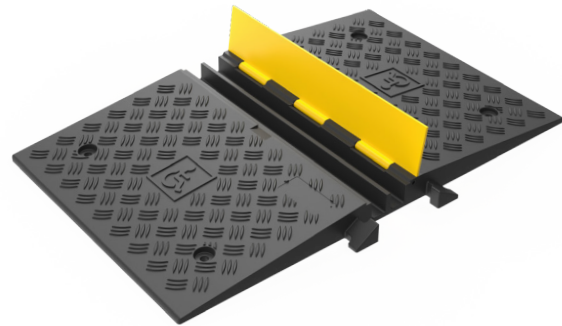
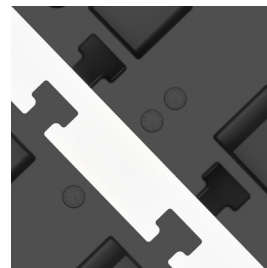




# 2-CHANNEL DDA WHEELCHAIR CABLE RAMP



BUILT-IN HANDLE



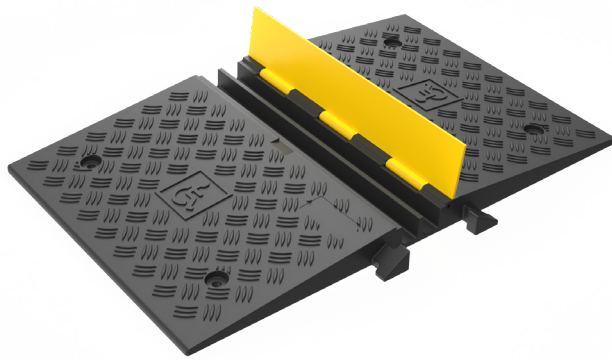
INTERLOCKING SYSTEM



DDA/ADA COMPLIANT



# Advantages +



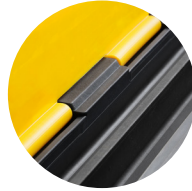
### BUILT-IN HANDLE

Easy to transport and reduces fatigue, saving time during installation and storage.



### THICK YELLOW LID

UV-stabilised PE with a non-slip surface to reduce tripping risks.



### REINFORCED STRUCTURE

Premium material to reinforce key stress points like hinges and connectors.



### INTERLOCKING SYSTEM

Easy to install and use, with no risk of disconnecting during operation.



### DDA/ADA COMPLIANT

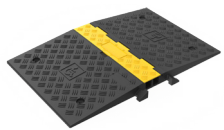
Designed to support accessible routes for wheelchair and mobility aid users.



### NYLON ROD

Integrated nylon rod securely connects the base and yellow cover, preventing detachment.

PRODUCT	OVERALL DIMENSIONS (L*W*H)	CHANNEL DIMENSIONS (W*H)	MATERIAL
---------	----------------------------	--------------------------	----------

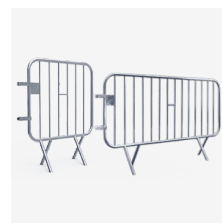


490 x 785 x 45 mm (19.3" x 30.9" x 1.8")

30 x 32 mm (1.18" x 1.26")

Premium recycled rubber (no toxic smell)

## BEST SELLERS



Headquarters: Hong Kong, China  
Production & Operations Centre: Qingdao, China



contact@sinoconcept.com  
<https://sinoconcept.com>