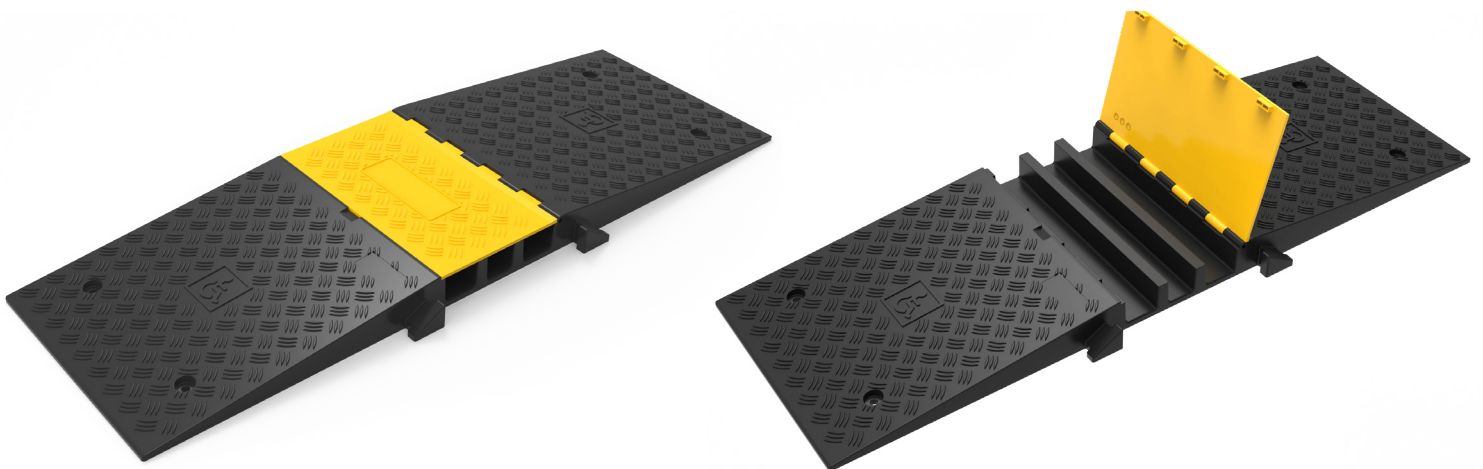
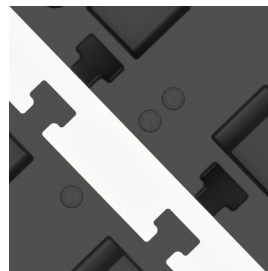




3-CHANNEL DDA WHEELCHAIR CABLE RAMP



BUILT-IN HANDLE



INTERLOCKING SYSTEM



DDA/ADA COMPLIANT

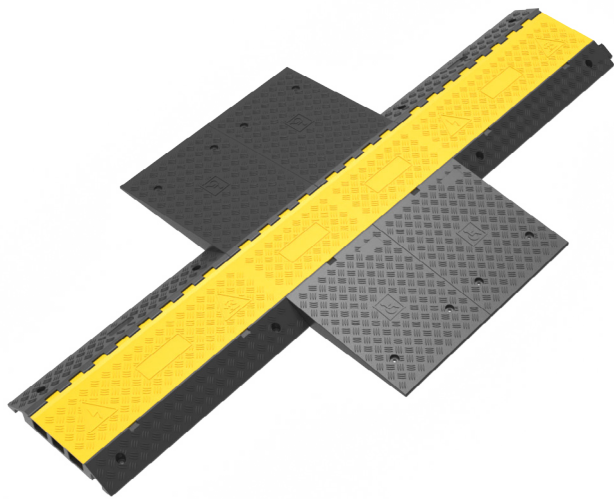


Headquarters: Hong Kong, China
Production & Operations Centre: Qingdao, China



contact@sinoconcept.com
<https://sinoconcept.com>

Advantages +



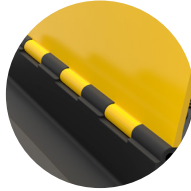
BUILT-IN HANDLE

Easy to transport and reduces fatigue, saving time during installation and storage.



THICK YELLOW LID

UV-stabilised PE with a non-slip surface to reduce tripping risks.



REINFORCED STRUCTURE

Premium material to reinforce key stress points like hinges and connectors.



INTERLOCKING SYSTEM

Easy to install and use, with no risk of disconnecting during operation.



DDA/ADA COMPLIANT

Designed to support accessible routes for wheelchair and mobility aid users.



NYLON ROD

Integrated nylon rod securely connects the base and yellow cover, preventing detachment.

| PRODUCT | OVERALL DIMENSIONS (L*W*H) | CHANNEL DIMENSIONS (W*H) | MATERIAL |
|---------|---|---|---|
| | 450 x 1380 x 70 mm (17.7" x 54.3" x 2.8") | 65 x 50 mm (2.56" x 2") x 2 56 x 50 mm (2.2" x 2") | Premium recycled rubber (no toxic smell) |

BEST SELLERS



Headquarters: Hong Kong, China
Production & Operations Centre: Qingdao, China



contact@sinoconcept.com
<https://sinoconcept.com>