



# ONE - PART SPEED BUMP 1830 MM (6')



GLASS BEAD REFLECTORS



INTERLOCKING SYSTEM



REACH CERTIFIED

**IMPORTANT: OUR PRODUCTS ARE MADE OF PLASTIC-RUBBER COMPOSITE WITHOUT ANY TOXIC SMELL.**



Headquarters: Hong Kong, China  
Production & Operations Centre: Qingdao, China

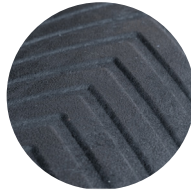


contact@sinoconcept.com  
<https://sinoconcept.com>

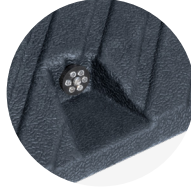
# Advantages +



**PLASTIC-RUBBER COMPOSITE**  
Cost effective, UV-resistant, and very sturdy.



**SKIDPROOF SURFACE**  
Non-slip surface for better grip.



**180° GLASS BEAD REFLECTORS**  
Highly visible in all conditions.





**INTERLOCKING SYSTEM**  
Easy to install and use, with no risk of disconnecting during operation.



**HEAVY-DUTY HARDWARE**  
Premium-quality screws and plastic anchors – rust-proof and highly durable.



**CUSTOM-MADE PACKING**  
Designed for international shipping, easy storage and delivery.

PRODUCT	OVERALL DIMENSIONS	BUILT-IN CHANNEL	MOUNTING HARDWARE
	Middle part: 1830 x 300 x 50 mm (6' x 12" x 2") End cap: 150 x 300 x 50 mm (6" x 12" x 2")	2 x Ø30 mm (1.2")	Coach screw: M12 x 160 mm (M12 x 6") Anchor: Ø17 x 105 mm (Ø0.67" x 4.1") 

## BEST SELLERS

