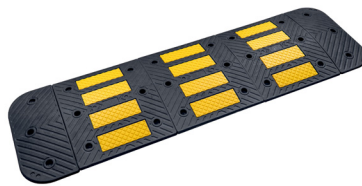




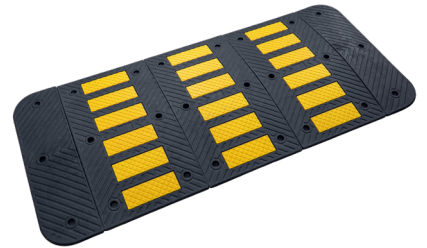
# SPEED HUMPS



3 CM SPEED HUMP



5 CM SPEED HUMP (600 MM WIDE)



5 CM SPEED HUMP (900 MM WIDE)



7 CM SPEED HUMP (900 MM WIDE)



7 CM SPEED HUMP (1200 MM WIDE)



YELLOW MOULDED-IN COVER



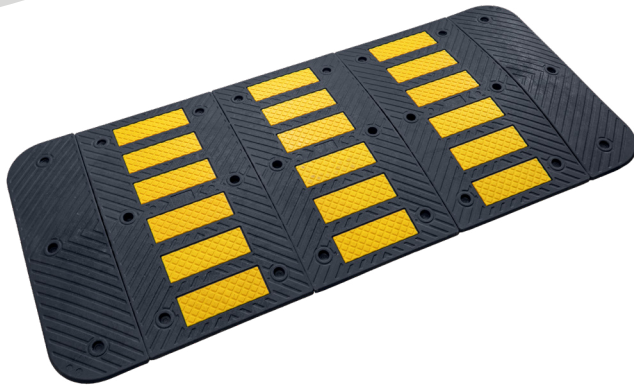
INTERLOCKING SYSTEM



REACH CERTIFIED



# Advantages +



## YELLOW MOULDED-IN COVER

Built into the speed hump to stay bright with no peeling or fading. Yellow stays yellow.



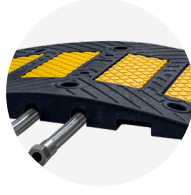
## PLASTIC-RUBBER COMPOSITE

Cost-effective, UV-resistant, and very sturdy.



## INTERLOCKING SYSTEM

Male and female connectors to prevent movement and allow quick installation.








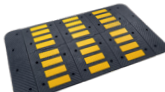
## 2-IN-1 PRODUCT

Built-in channels for cable protection.



## HEAVY-DUTY HARDWARE

Premium-quality screws and plastic anchors – rust-proof and highly durable.

PRODUCTS	TYPES	OVERALL DIMENSIONS (L*W*H)	MAX. CABLE DIAMETER	MOUNTING HARDWARE
	3 cm speed hump	Middle part: 500 x 600 x 30 mm (20" x 24" x 1.18") End cap: 250 x 600 x 30 mm (10" x 24" x 1.18")	/	
	5 cm speed hump (600 mm wide)	Middle part: 500 x 600 x 50 mm (20" x 24" x 1.97") End cap: 250 x 600 x 50 mm (10" x 24" x 1.97")	2 x Ø30 mm (Ø1.18")	Coach screw: M12 x 160 mm (M12 x 6")
	5 cm speed hump (900 mm wide)	Middle part: 500 x 900 x 50 mm (20" x 35" x 1.97") End cap: 250 x 900 x 50 mm (10" x 35" x 1.97")	2 x Ø30 mm (Ø1.18")	Anchor: Ø17 x 105 mm (Ø0.67" x 4.1")
	7 cm speed hump (900 mm wide)	Middle part: 500 x 900 x 70 mm (20" x 35" x 2.76") End cap: 250 x 900 x 70 mm (10" x 35" x 2.76")	2 x Ø45 mm (Ø1.77")	
	7 cm speed hump (1200 mm wide)	Middle part: 500 x 1200 x 70 mm (20" x 47" x 2.76") End cap: 250 x 1200 x 70 mm (10" x 47" x 2.76")	2 x Ø45 mm (Ø1.77")	

## BEST SELLERS



Headquarters: Hong Kong, China  
Production & Operations Centre: Qingdao, China



contact@sinoconcept.com  
<https://sinoconcept.com>