



PLASTIC-RUBBER COMPOSITE WHEEL STOPS



550 MM (2')



900 MM (3')



1220 MM (4')



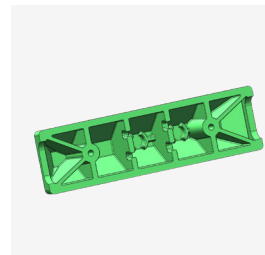
1650 MM (5.4')



1830 MM (6')



CONVENIENT STORAGE



HEAVY-DUTY STRUCTURE



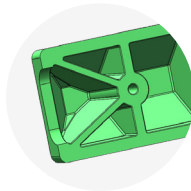
REACH CERTIFIED



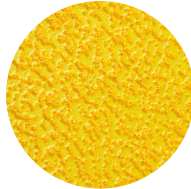
Advantages +



PLASTIC-RUBBER COMPOSITE
Cost effective, UV-resistant, and very sturdy.



HEAVY-DUTY STRUCTURE
Thick walls and V-shaped ribs for maximum strength in tough conditions.



REFLECTIVE FILMS
Embedded thermoplastic reflective road marking films to enhance visibility and safety.



CONVENIENT STORAGE
Screws, anchors, and caps stored underneath for easy setup.



CUSTOM-MADE PACKING
Designed for international shipping, easy storage and delivery.



PRODUCTS	TYPES	OVERALL DIMENSIONS (L*W*H)	MOUNTING HARDWARE
	550 mm (2')	550 x 150 x 100 mm (2' x 6" x 4")	<p>Coach screw: M12 x 160 mm (M12 x 6") Anchor: Ø17 x 105 mm (Ø0.67" x 4.1") Cap: Ø33.5 mm (Ø1.32")</p>
	900 mm (3')	900x 150 x 100 mm (3' x 6" x 4")	
	1220 mm (4')	1220 x 150 x 100 mm (4' x 6" x 4")	
	1650 mm (5.4')	1650 x 150 x 100 mm (5.4' x 6" x 4")	
	1830 mm (6')	1830 x 150 x 100 mm (6' x 6" x 4")	

BEST SELLERS

